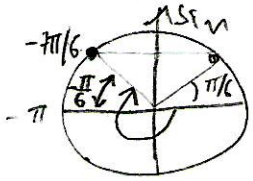
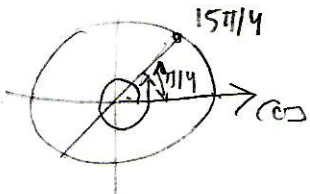


Trigonometria

a) $\sin(-\frac{7\pi}{6}) \equiv \sin\frac{\pi}{6} = \frac{1}{2}$

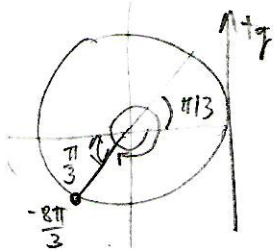


b) $\cos\frac{15\pi}{4} = \cos\frac{\pi}{4} = \frac{\sqrt{2}}{2}$



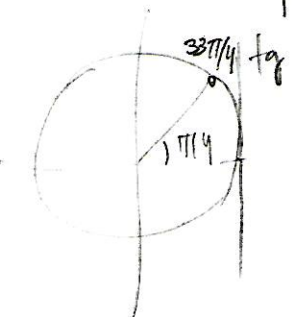
$\frac{5\pi}{4} = 3\pi + \frac{3\pi}{4}$

c) $\tan(-\frac{8\pi}{3}) = +\tan\frac{\pi}{3} = +\sqrt{3}$



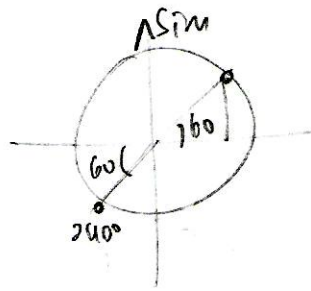
$-\frac{8\pi}{3} = -2\pi - \frac{2\pi}{3}$

d) $\tan\frac{33\pi}{4} = \tan\frac{\pi}{4} = 1$

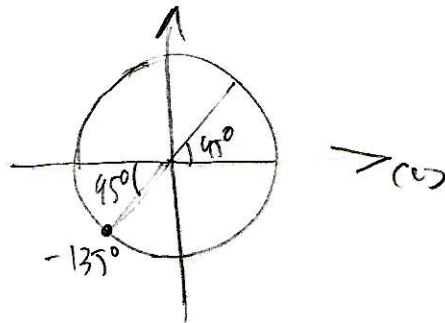


$\frac{33\pi}{4} = 8\pi + \frac{\pi}{4}$

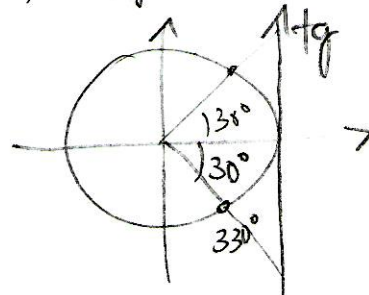
e) $\sin 240^\circ = -\sin 60^\circ = -\frac{\sqrt{3}}{2}$



f) $\cos(-135^\circ) = -\cos 45^\circ = -\frac{\sqrt{2}}{2}$



g) $\tan 330^\circ = -\tan 30^\circ = -\frac{\sqrt{3}}{3}$



h) $\sin 495^\circ = \sin 45^\circ = \frac{\sqrt{2}}{2}$

